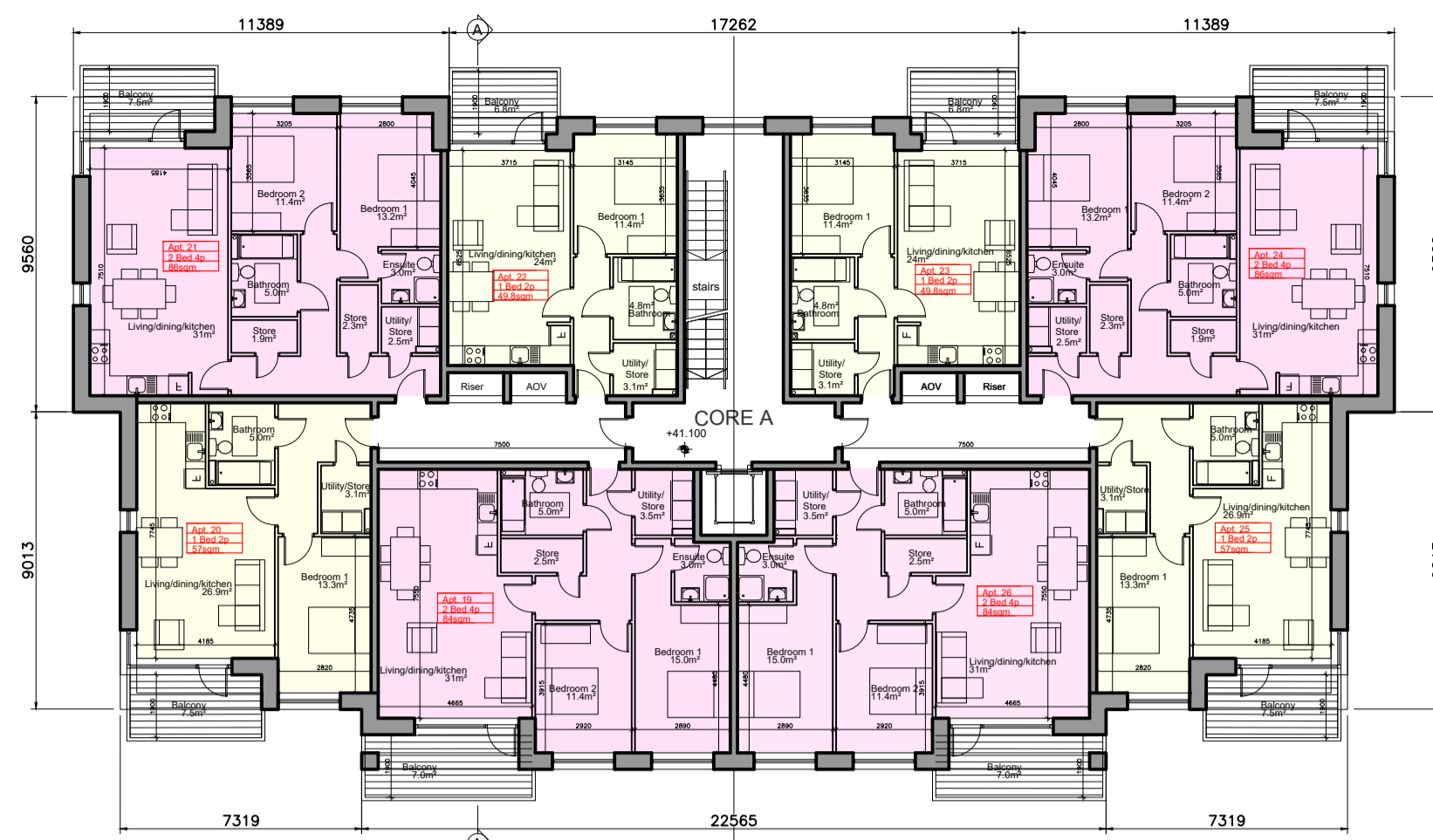
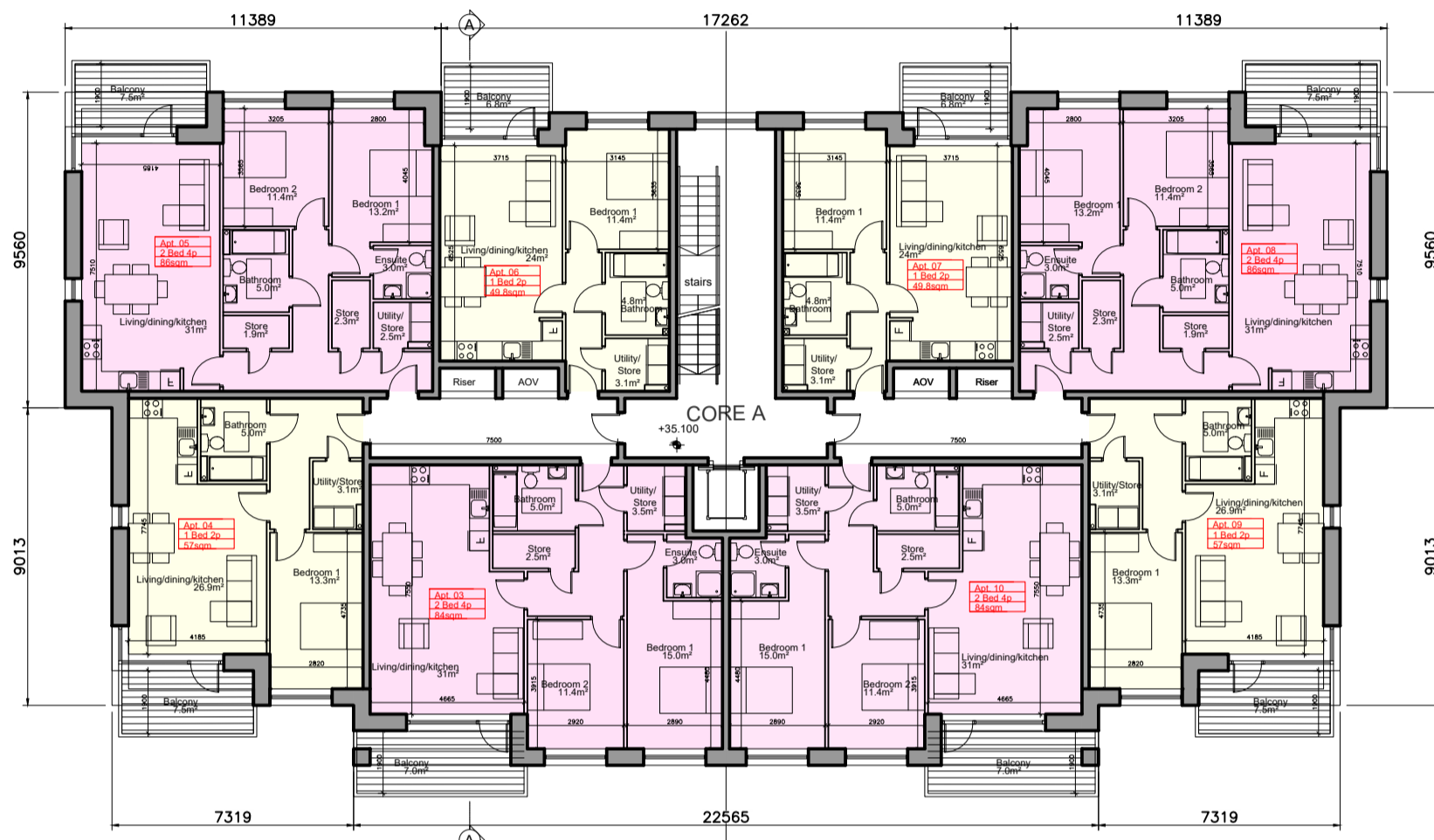


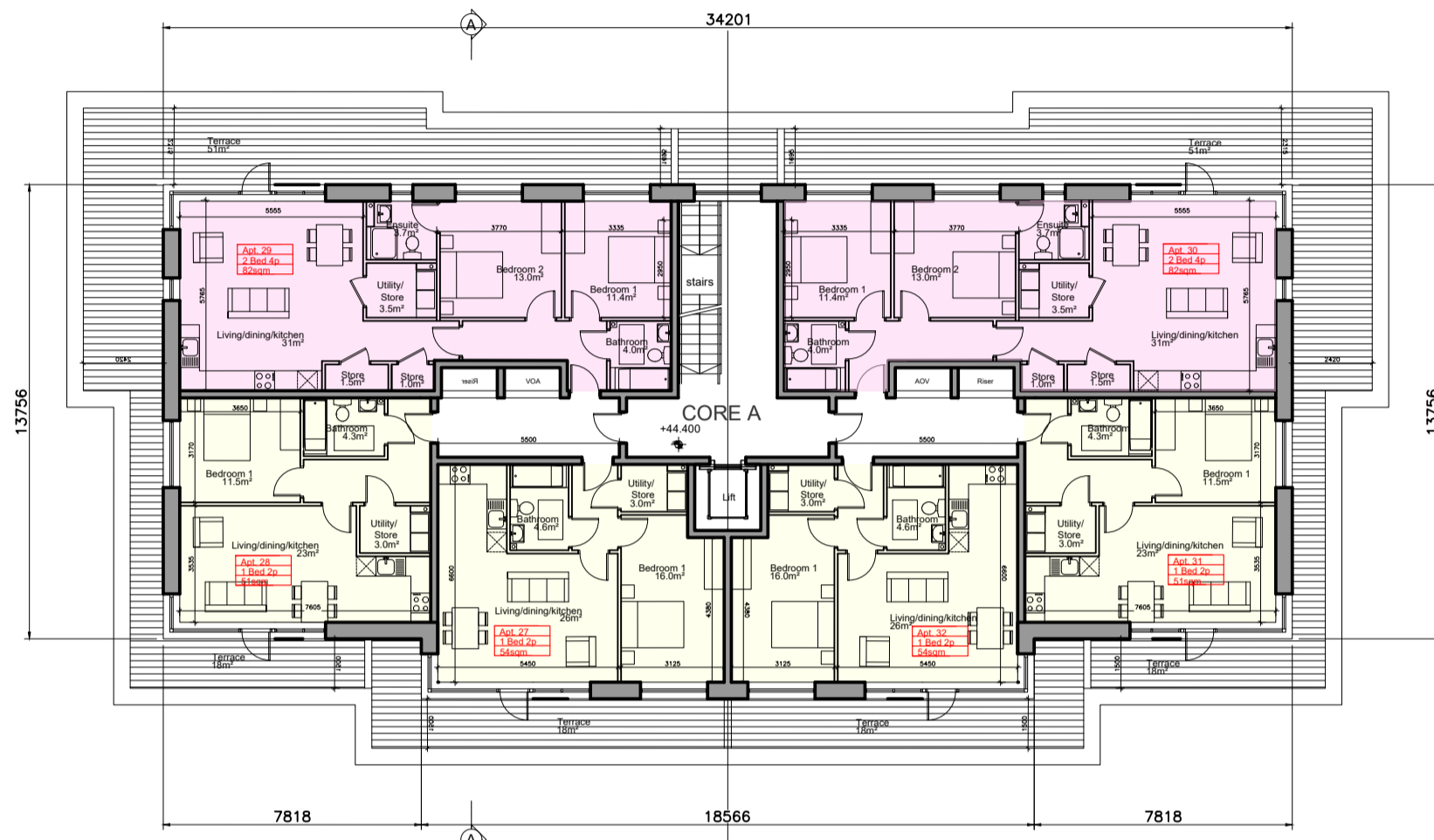
APARTMENT BLOCK B2
SECOND FLOOR PLAN



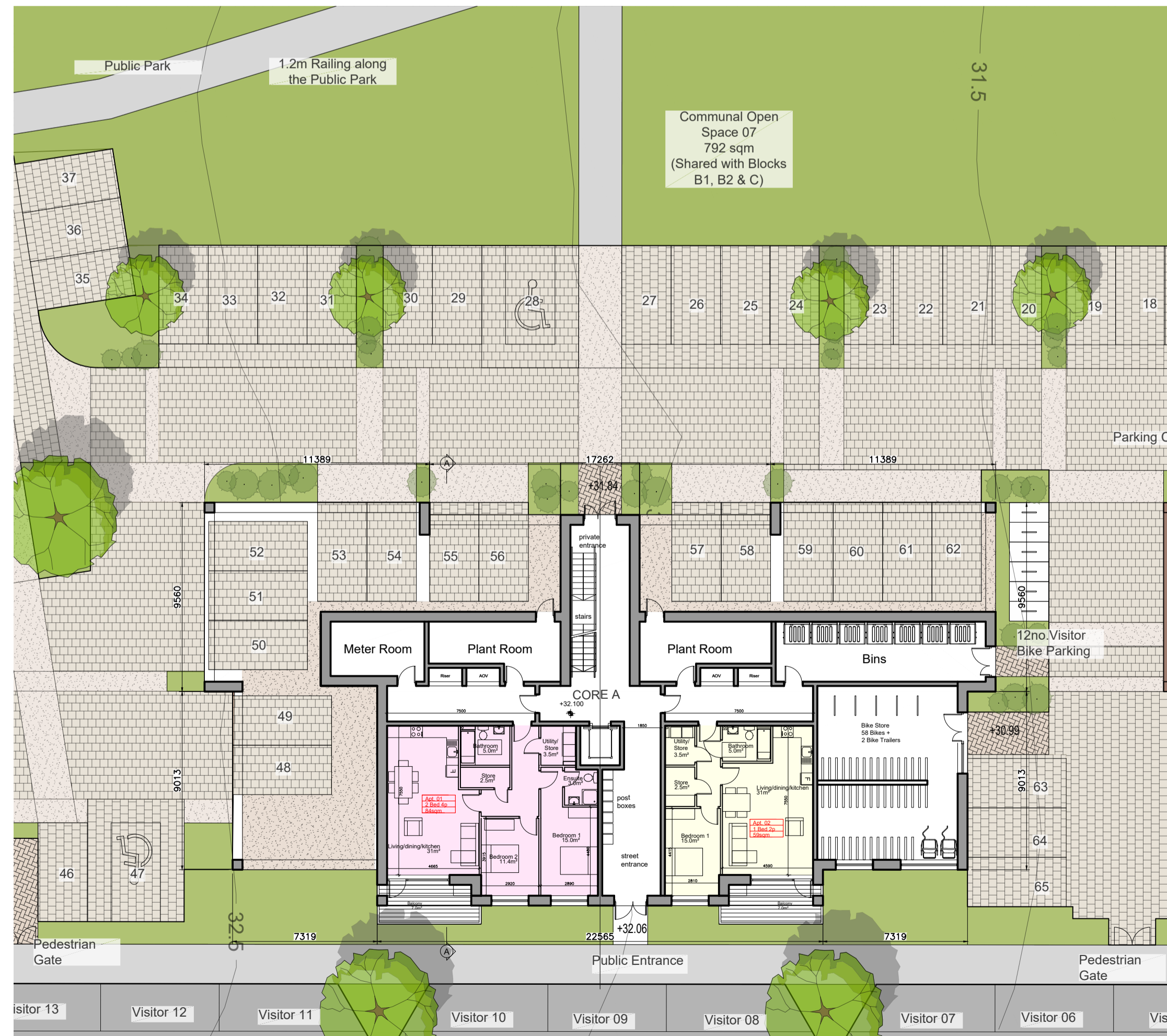
APARTMENT BLOCK B2
THIRD FLOOR PLAN



APARTMENT BLOCK B2
FIRST FLOOR PLAN



APARTMENT BLOCK B2
FOURTH FLOOR PLAN

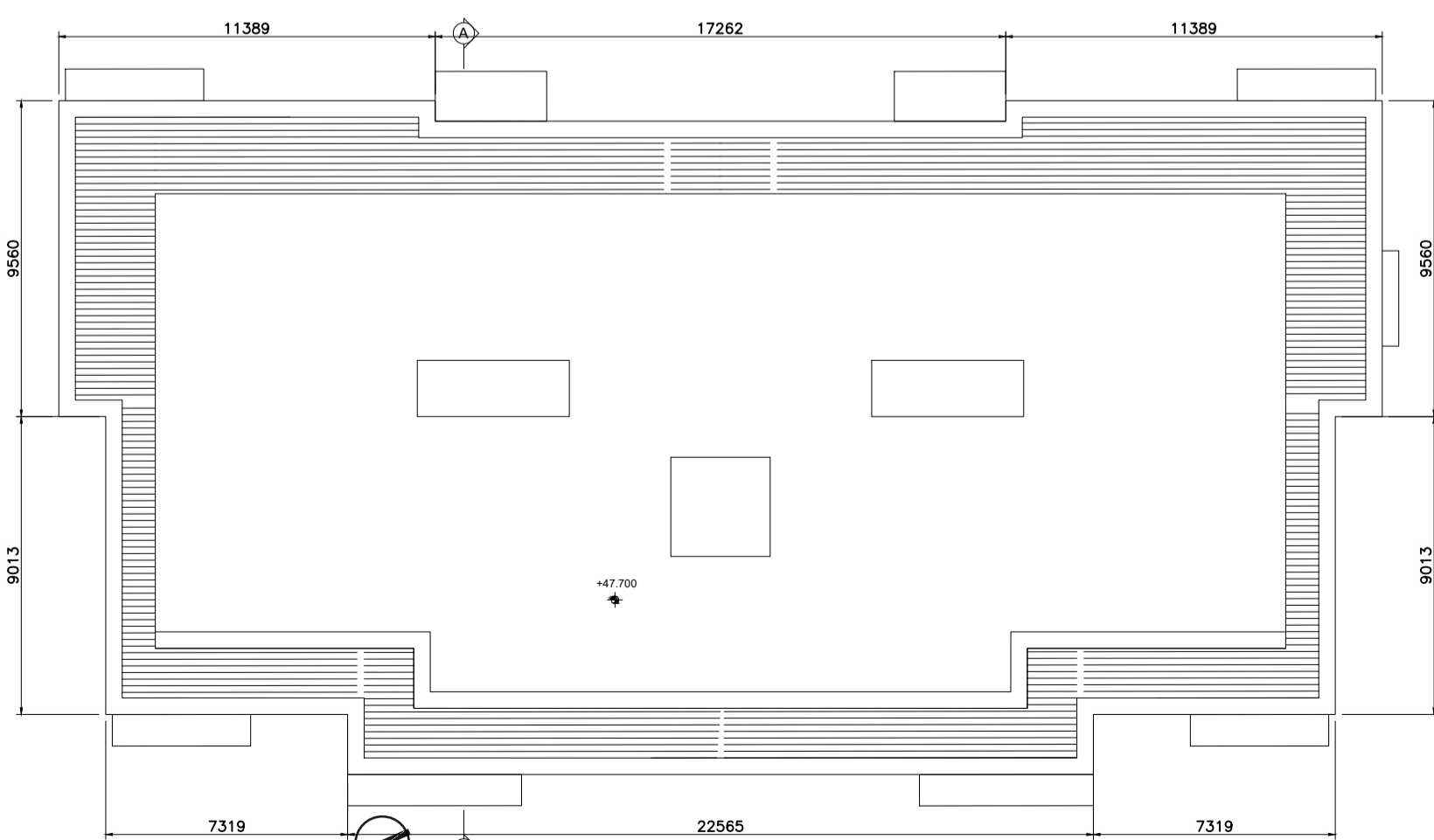


APARTMENT BLOCK B2
GROUND FLOOR PLAN

Unit Type

2 Bed Apartment - 4 Person
 1 Bed Apartment

| Apt. Block | 1 Beds | 2 Beds | Total Units |
|------------|--------|--------|-------------|
| B2 | 17 | 15 | 32 |



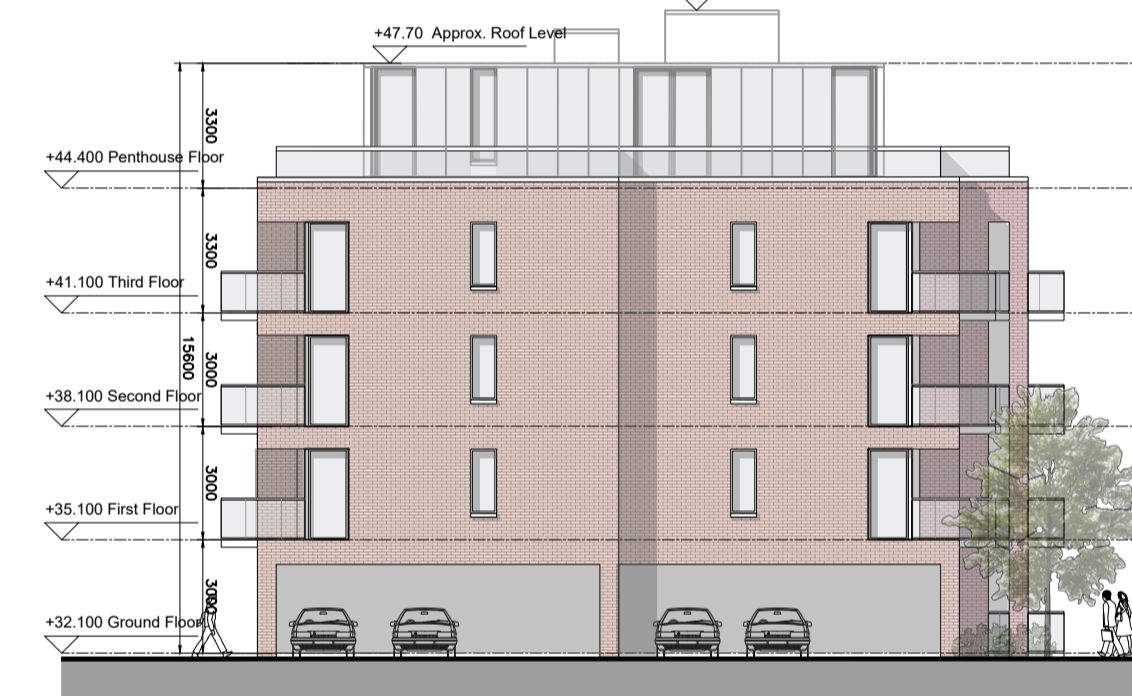
APARTMENT BLOCK B2
ROOF PLAN



APARTMENT BLOCK B2
EAST ELEVATION (STREET ELEVATION)



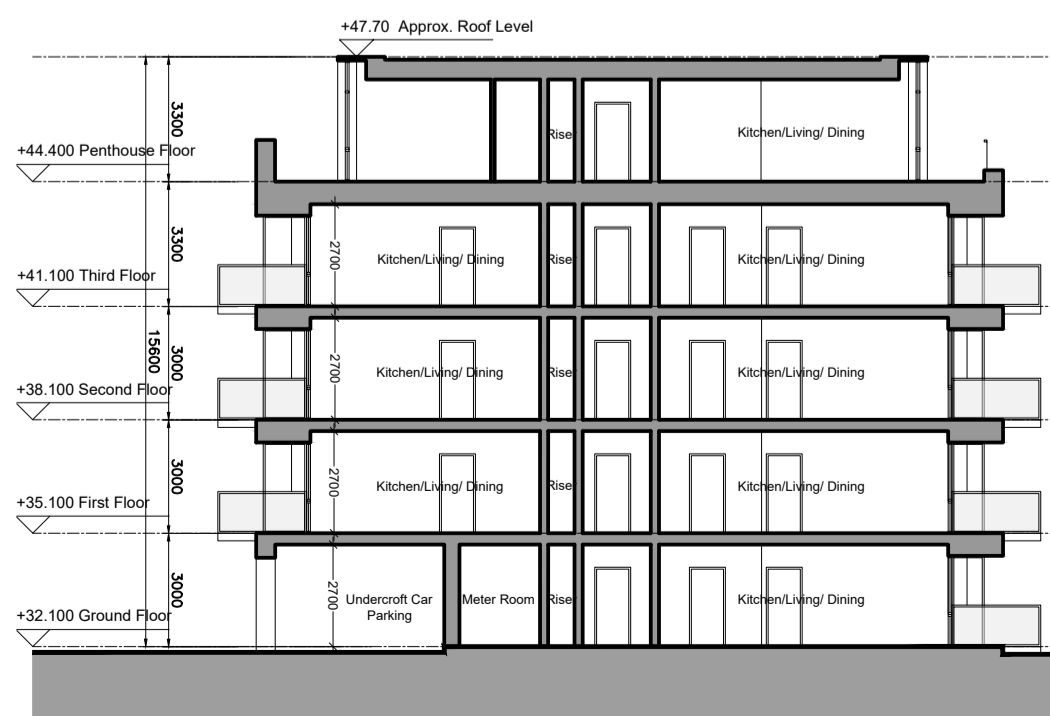
APARTMENT BLOCK B2
WEST ELEVATION (REAR)



APARTMENT BLOCK B2
SOUTH ELEVATION



APARTMENT BLOCK B2
NORTH ELEVATION



APARTMENT BLOCK B2
SECTION A-A

- 1 This drawing is copyright.
- 2 Do not scale this drawing.
- 3 Errors and omissions to be immediately notified to Architect.
- 4 All dimensions to be checked on site.
- 5 To be read with relevant Engineers drawings.

Note on Internal Floor Plans
All noted room areas are gross.

The proposed areas and aggregate areas comply with *Sustainable Urban Housing: Design Standards for New Apartments Guidelines for Planning Authorities*. (December 2020)

Where bedroom areas are noted they are exclusive of any built-in storage space.

Storage is generally provided off the hallway or kitchen, and is not provided within a bedroom. Furniture, fittings and fixtures shown on the plans are indicative.

External Finishes:

Roof:
Single ply roof membrane behind parapet.

Walls:
Selected facing brick with render where indicated on drawings with precast / stone capping or pressed metal capping to parapets

Cladding to Upper Level:
Dark metal / Dark fibre cement boarding where indicated on drawings.

Louvers:
Proprietary metal louvred doors with colour to match windows/doors where indicated on drawings.

Windows:
Aluminium framed window system

Gutters/downpipes:
uPVC or aluminium

Balconies:
Projecting: Toughened glazing & stainless steel handrails on precast concrete or metal frame galvanized steel base and guarding/ railing.

Entrance Canopy:
Pressed or standing seam metal on Timber framing

| description | date | ins |
|--|--|--|
| Apartment Block B2 | | |
| Floor plans, Roof Plan, Section & Elevations | | |
| job | Development at Oldtown, Swords, Co. Dublin Phase 5 | scale 1:200 A1 date MAR 22 drawn LD checked PG |
| client | Gerard Gannon Properties | |
| issue | Planning SHD Stage 3 | |

CONROY CROWE KELLY ARCHITECTS
65 MERRION SQUARE DUBLIN 2
PHONE 6613990/1 FAX 6765715
E-MAIL info@eck.ie